



# Global Cancer Initiatives: Radiation in medicine within the context of the cancer continuum

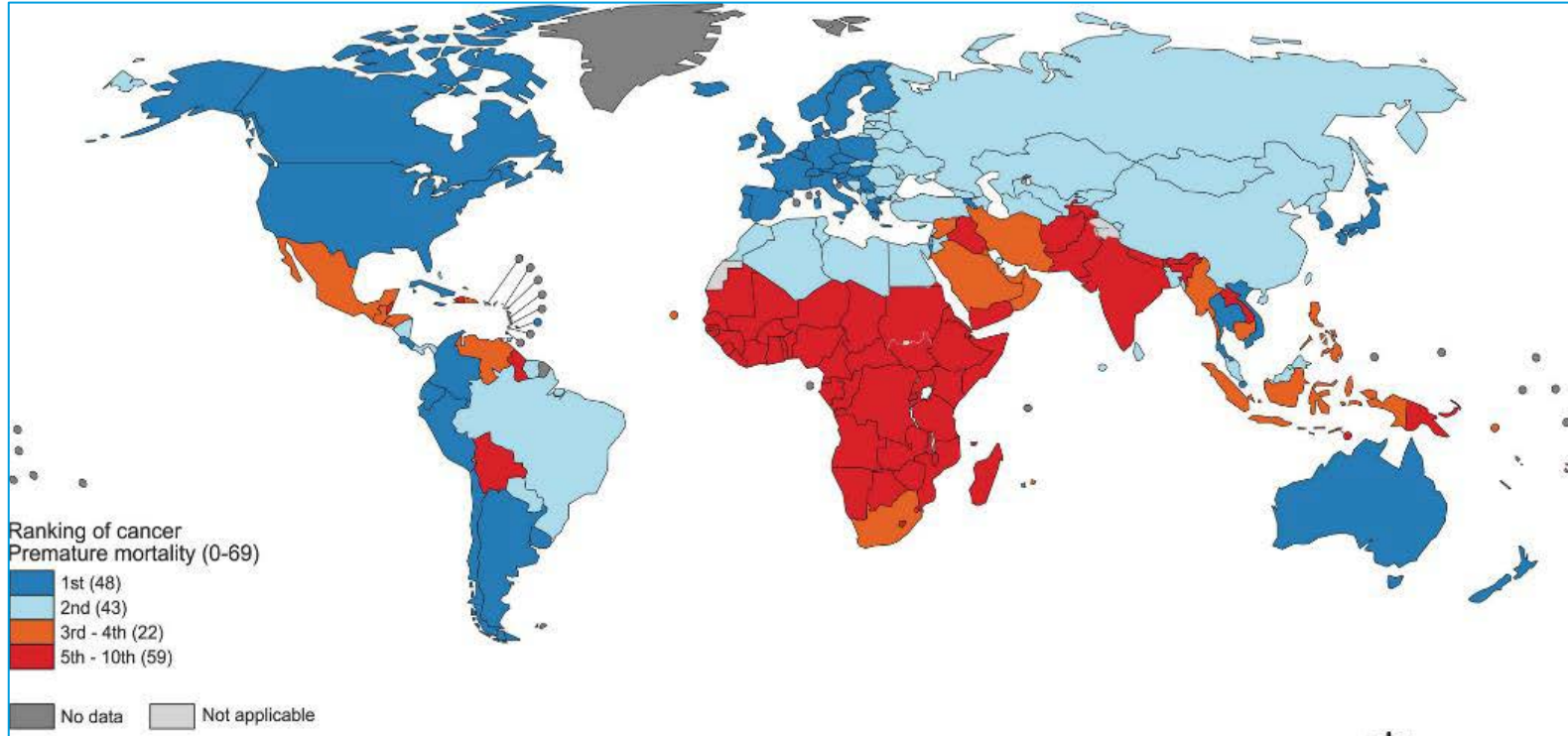
Dr. Princess Nothemba Simelela

Assistant Director General  
Special Advisor to the  
Director General, Strategic Priorities



2022

## SDG 3.4. Cancer as **leading cause of premature deaths**



# WHO's strategic shifts in cancer

## Leadership

Setting the **global cancer agenda**, focused on UHC and PHC, innovation for impact through **3 integrated WHO cancer initiatives**

Convening stakeholders through **Global Forums** & **cancer centre networks** to encourage coordinated action

Forging **partnerships** with **>300** implementing partners across all regions

## Norms & standards

**12** guidance products (2019 – 2022)



Co-creation of products with **people affected by cancer**



## Technical support

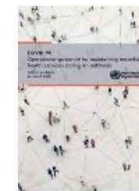
**>70 countries** supported (2019–22)



**Impact framework & HIMS with IARC**

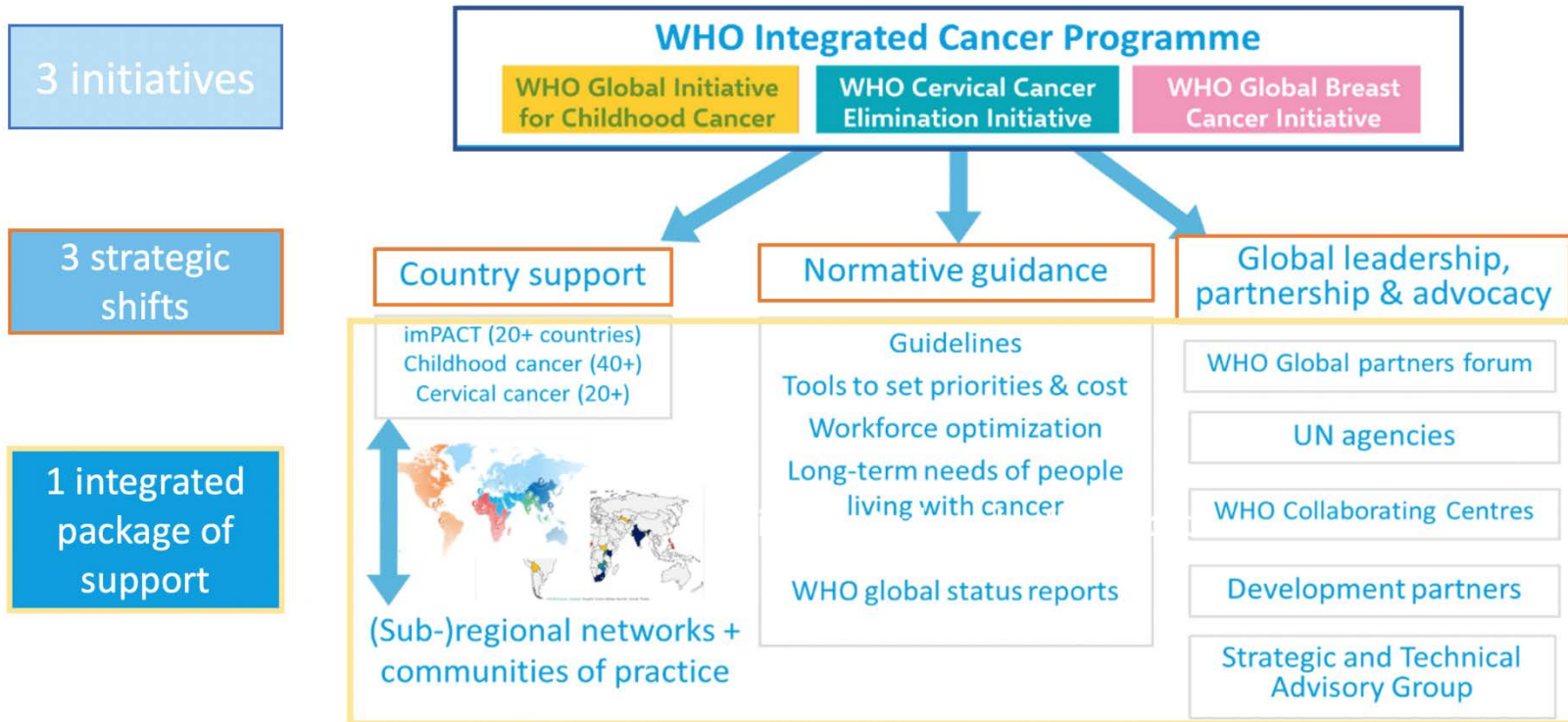


Cancer in **global health security**



# WHO's programme of work in cancer

*Integrated Approach for 3 cancer Initiatives*





# The Global Strategy

Global strategy to accelerate the elimination of cervical cancer as a public health problem



## LIFE-COURSE APPROACH

Three pillars provide a **comprehensive strategy** for cervical cancer control to ensure that lifetime benefits are maintained.

THRESHOLD: All countries to reach < 4 cases per 100 000 women

### 2030 Control Targets

**90%**

of girls fully vaccinated with HPV vaccine by age 15 years.

**70%**

of women are screened with a high-performance test by 35 years of age and again by 45 years of age.

**90%**

of women identified with cervical disease receive treatment (90% of women with precancer treated, and 90% of women with invasive cancer managed).

# Achieving Management of 90% of Invasive Cancer Cases

## Why 40% survival gap?

Delays in diagnosis

Implement early diagnosis strategy (eg, navigators, ↓ stigma)

Lack available treatment

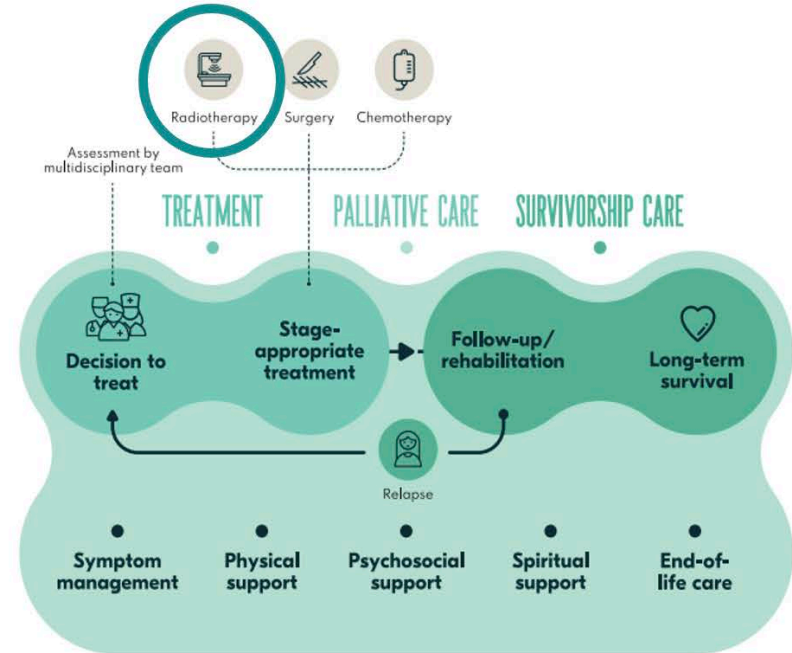
Blending funding & market shaping (eg, include XRT in UHC package)

Insufficient workforce

Optimize HWF, targeted training (eg, palliative care capacity build)

Low quality care

Guideline develop, facility QI (eg, multi-disc tumor boards)



# Global Initiative for Childhood Cancer



Launched in 2018 → active in 65 countries

## Context

**400,000** diagnosed / yr

Profound **inequity** in outcome determined by country, socioeconomic status



## Approach



**>60% survival and suffering alleviated for all**  
Save **one million** children by 2030

- (1) Active in **>60** countries  
**>4** regional networks
- (2) **>120** partners + WHO community of practice
- (3) **10** priority action in **CureAll** approach + investment cases



# Global Breast Cancer Initiative

Announced in 2021 → launch in 2023

## Context

**2,200,000** diagnosed each yr

**Most common** cancer  
#1 cause cancer deaths for women

## Major survival inequities

What explains global inequities?

**Late diagnosis**

Detected at advanced stage in LMIC

**Inadequate services**

Insufficient diagnostic and treatment facilities

**Low coverage**

Failure to include breast cancer in UHC

**Empower:** Women-centred care throughout lifecourse needed,

## Approach



Reduce breast cancer mortality by 2.5% per year, to **save 2.5 million lives** by 2040.

**PILLAR 1:**

Health promotion & early diagnosis

Goal: Achieve diagnosis of at least 60% of invasive breast cancers at stage I or II

**PILLAR 2:**

Timely breast diagnostics

Goal: Evaluation, imaging, tissue sampling and pathology completed within 60 days

**PILLAR 3:**

Comprehensive breast cancer management

Goal: 80% undergo multimodality treatment without abandonment with successful return to community

### GBCI integrated approach

**1**

**Convening stakeholders and developing a platform for action:** multisectoral working groups to address the 3 pillars

**2**

**Operational guidance:** provide evidence-based technical package for implementation

**3**

**In-country engagement and support:** harness political will, integrate cancer initiatives and create partnerships



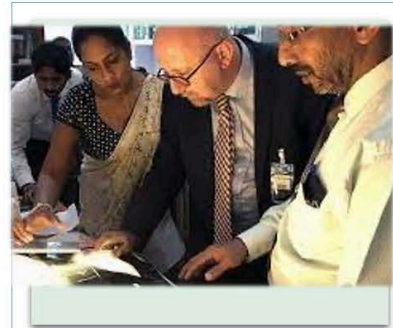
# Collaboration with IAEA



Technical guidance  
(eg, cancer centres)



Radiotherapy technical  
specifications &  
market shaping



imPACT reviews



Global initiatives  
(eg, Rays of Hope)

*“It always seems  
impossible until  
it’s done”*

*- Nelson Mandela*



[@DrNonoSimelela](#)





The Teal Sisters, Zambia, survivors and advocates for cervical cancer elimination

Credits

**THANK YOU**